

WHAT IS THE SUNRAYSIA WATER EFFICIENCY PROJECT?

The Sunraysia Water Efficiency Project (SWEP) is an off-farm modernisation project that will upgrade and remove outdated water infrastructure in the Mildura, Red Cliffs and Merbein irrigation districts.

The project involves the modernisation of around 27 km of irrigation channel through the installation of channel liners and buried pipelines. In addition, up to 279 Dethridge meters will be removed or upgraded, and up to 210 domestic and stock outlets will have modern flow meters installed.

Image top right: SWEP will line channels to reduce seepage and water losses across three LMW irrigation districts.

WHY DELIVER THIS PROJECT?

These works will increase the efficiency of water delivery for Lower Murray Water (LMW) customers, remove redundant assets, extend the lifespan of irrigation infrastructure, and support the agricultural productivity of the region.

By minimising channel leakage and seepage, and more accurately measuring water used, the project will deliver 1.8GL water savings which is committed to the Commonwealth to enhance environmental outcomes in the Murray-Darling Basin.

Any additional savings will be shared equally between delivering water for Traditional Owners and improving urban water security in the region.

Image below: A Dethridge meter in the Merbein irrigation district.



HOW WILL SUNRAYSIA BENEFIT?

The project will provide many benefits to the Sunraysia region, including:

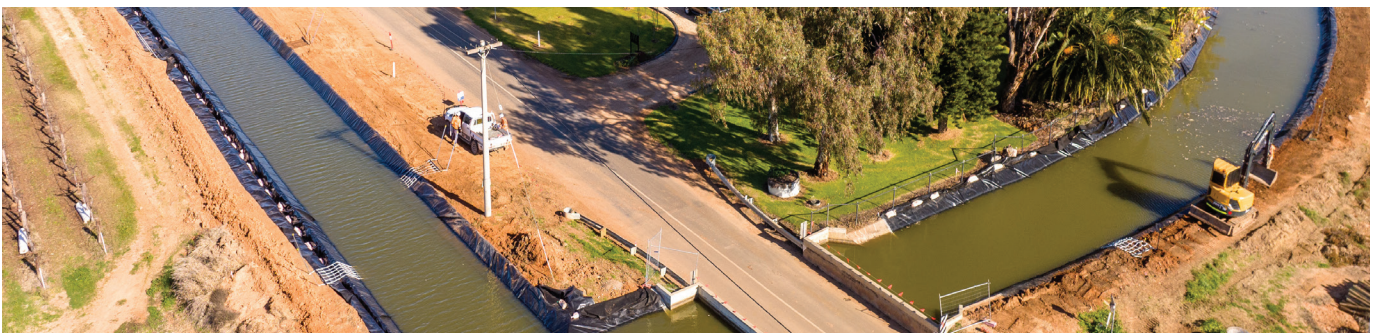
- Further modernisation and rationalisation of assets in the Mildura, Red Cliffs, and Merbein irrigation districts.
- Helping the Sunraysia district maintain its competitive advantage in the agri-food sector with more efficiency in its water delivery systems.
- Bringing forward essential maintenance and upgrade works to maintain water supply and reduce interruptions, offsetting works that otherwise would have been funded through LMW customer charges.
- Supporting more than 100 construction and delivery jobs for the region.
- Generating an estimated regional GDP increase of more than \$20 million.
- Reducing the amount of salinity in the River Murray and surrounding topsoil caused by leaking channels.

WHO IS DELIVERING AND FUNDING THE PROJECT?

The Australian Government is contributing \$37.9 million for the Project. The works are being delivered by Lower Murray Water.

WHAT IS THE PROJECT TIMELINE?

Most of the remaining works will be undertaken during the winter months of 2024. The Project is scheduled to be completed by the end of 2024.



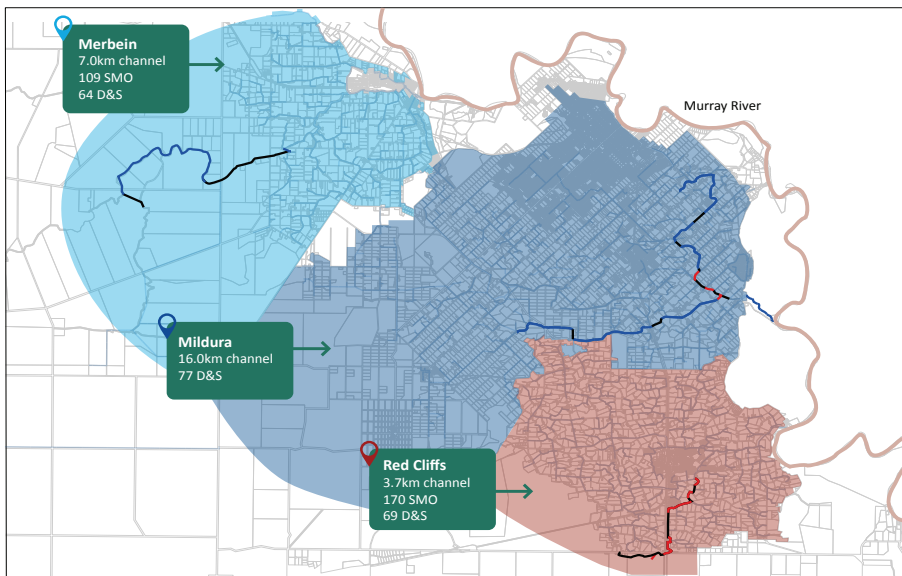
WHERE WILL WORKS BE UNDERTAKEN?

In 2023, the Project delivered more than 4km of channel lining in the Red Cliffs and Mildura districts, and removed almost 100 old Dethridge wheels from the system.

In 2024, the Project will deliver:

- 1.1km of open channel near the Nichols Point Primary School will be replaced by a buried pipeline.
- 19.8km of channels in the Mildura and Merbein districts will be lined
- More than 150 Dethridge wheels will be removed or updated through the Merbein and Red Cliffs districts.
- Inaccurate Domestic and Stock (D&S) flowmetres will be replaced.

SWEP Scope Overview



WILL LANDOWNERS BE CONSULTED?

Consultation with landowners is occurring throughout all stages of the project.

Engagement with customers and the community began in late 2022 and is ongoing. The Project team continues to work closely with landholders to ensure construction is planned to minimise any disruptions to irrigation needs.

Access arrangements are discussed with landholders as required throughout the project. Regular updates on the Project are available on the LMW webpage.

WILL LANDOWNERS BE IMPACTED?

Most project works will occur during winter when irrigation demands are lowest, to minimise impact on customers. Landowners will be fully informed of any impacts before they occur and have a chance to discuss these with the Project Team. Minimising impact on landowners is a priority focus for the Project Team.



WILL THE PROJECT AFFECT ACCESS TO WATER?

Channel works and the installation of pipelines may impact the availability of irrigation water. Lower Murray Water customers will be consulted well before this occurs, and the project will plan these works, in consultation with customers, to take place when water consumption is lowest.

HOW TO FIND OUT MORE

More information on this water saving project is available on our website at www.lmw.vic.gov.au/SWEP

For any further questions, or to sign up for project updates, please email swep@lmw.vic.gov.au or phone 1800 808 830 and ask to speak to the SWEP team.