



Victorian Water Availability Mildura Water Update Forum

**Graeme Hannan
Executive Manager Water Resources
Goulburn-Murray Water**

22 September 2009



Outline of Briefing

- 15 September 2009 seasonal allocation
- Inflow trends and resource position
- Seasonal allocations and outlook released on 15 September



15 September 2009 Seasonal Allocations

- Murray system at 13% HRWS
- Goulburn System at 7% HRWS
- All carryover in M +G (269 GL) available
- All other systems at 0% HRWS
- Shortfalls to allocation in all smaller systems
 - Other systems still experiencing very low inflows (allocations unlikely on current trends)



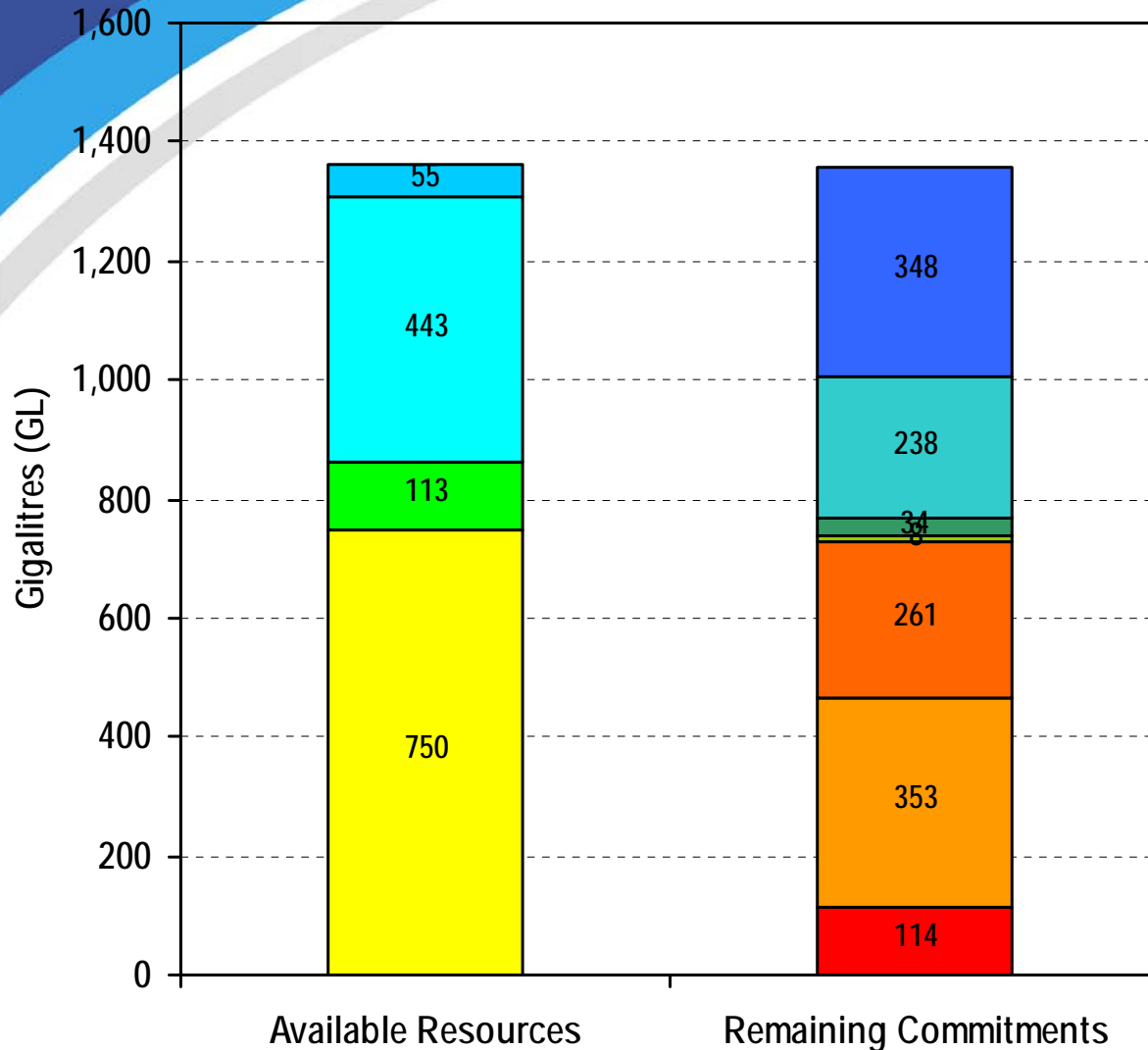
Water Resource Diagrams

- Visual representation of resource and commitment at a point in time
- Available at:
www.g-mwater.com.au/news/drought-response/



Murray System

Breakdown of Water in Store and Commitments
15 September 2009



Remaining Commitments

- Remaining Allocated Volume (incl Carry over)
- Channel Distribution Losses to 15 May 2010
- Environment & Lindsay River Allowance
- Essential Human Needs
- Vic Share of SA Dilution Flow
- Vic Share of River Losses Upstream of SA
- Vic Share of Evaporation

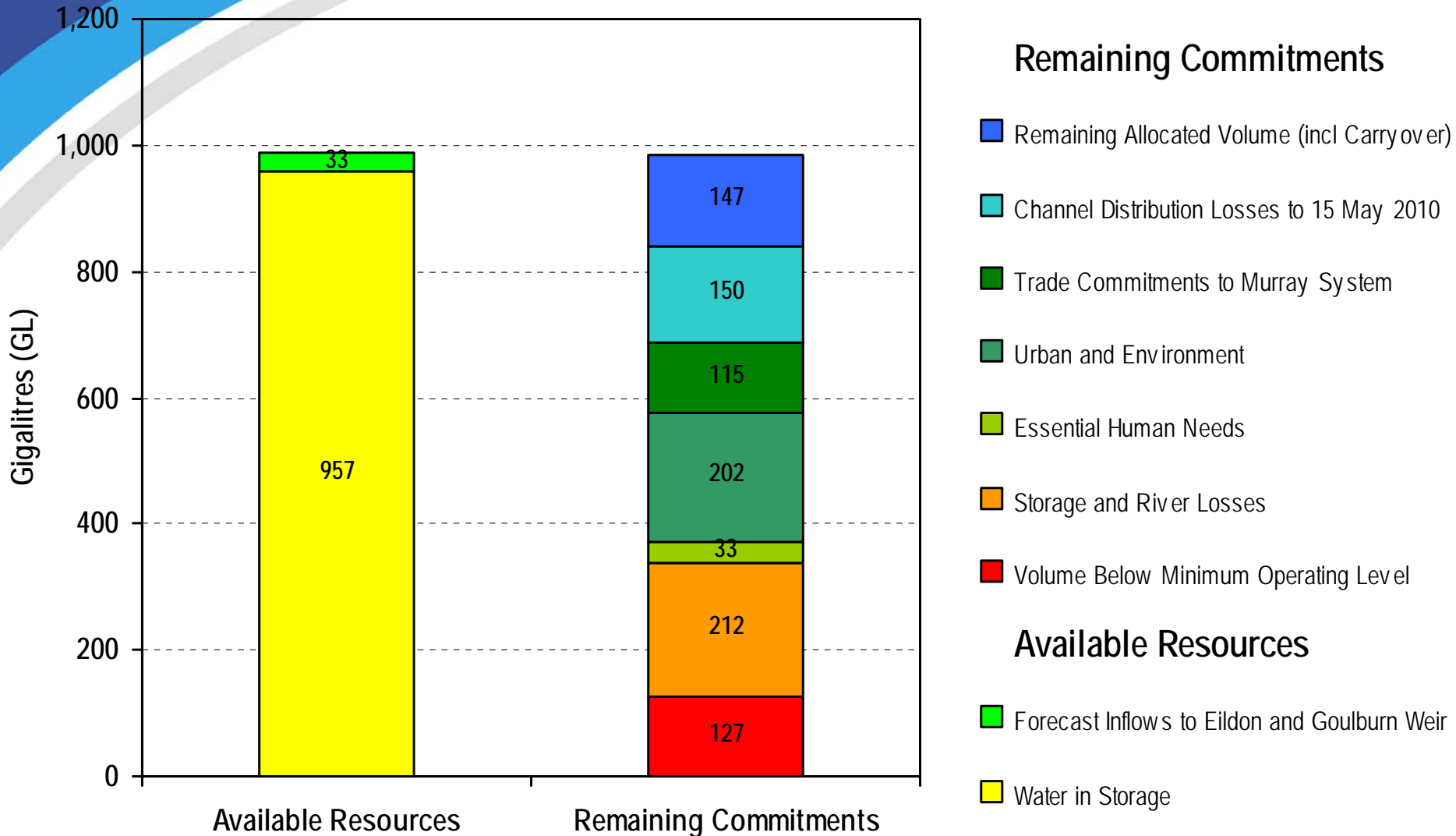
Available Resources

- Vic Share of Water in Transit
- Vic Share of Forecast Inflow to Murray System
- Vic Share of Goulburn Valley Account
- Vic Share of Water in Storage



Goulburn System

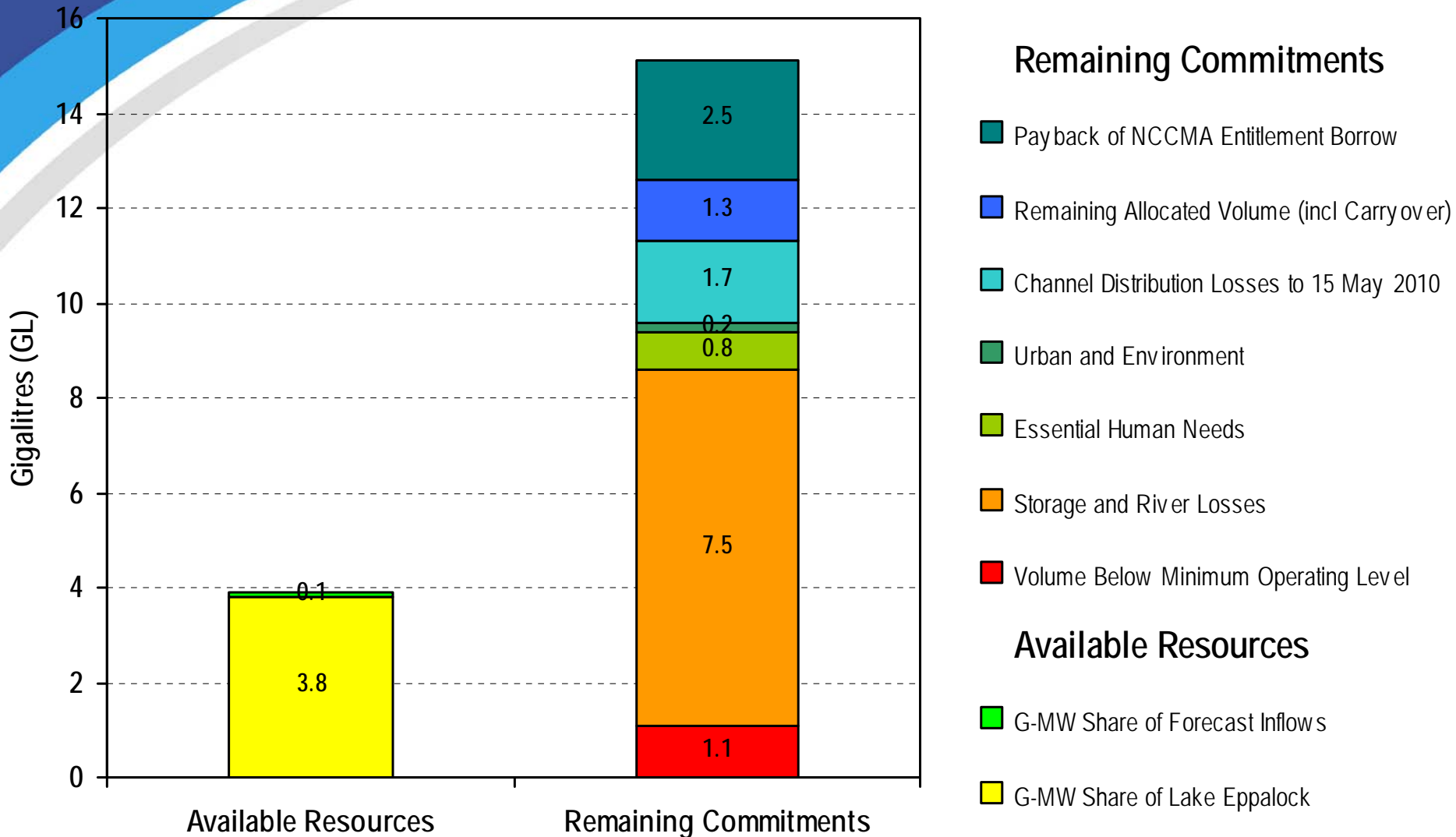
Breakdown of Water in Store and Commitments
15 September 2009





Campaspe System

Breakdown of Water in Store and Commitments
15 September 2009





Water allocated but not delivered

as at 15 September 2009, irrigation water shares

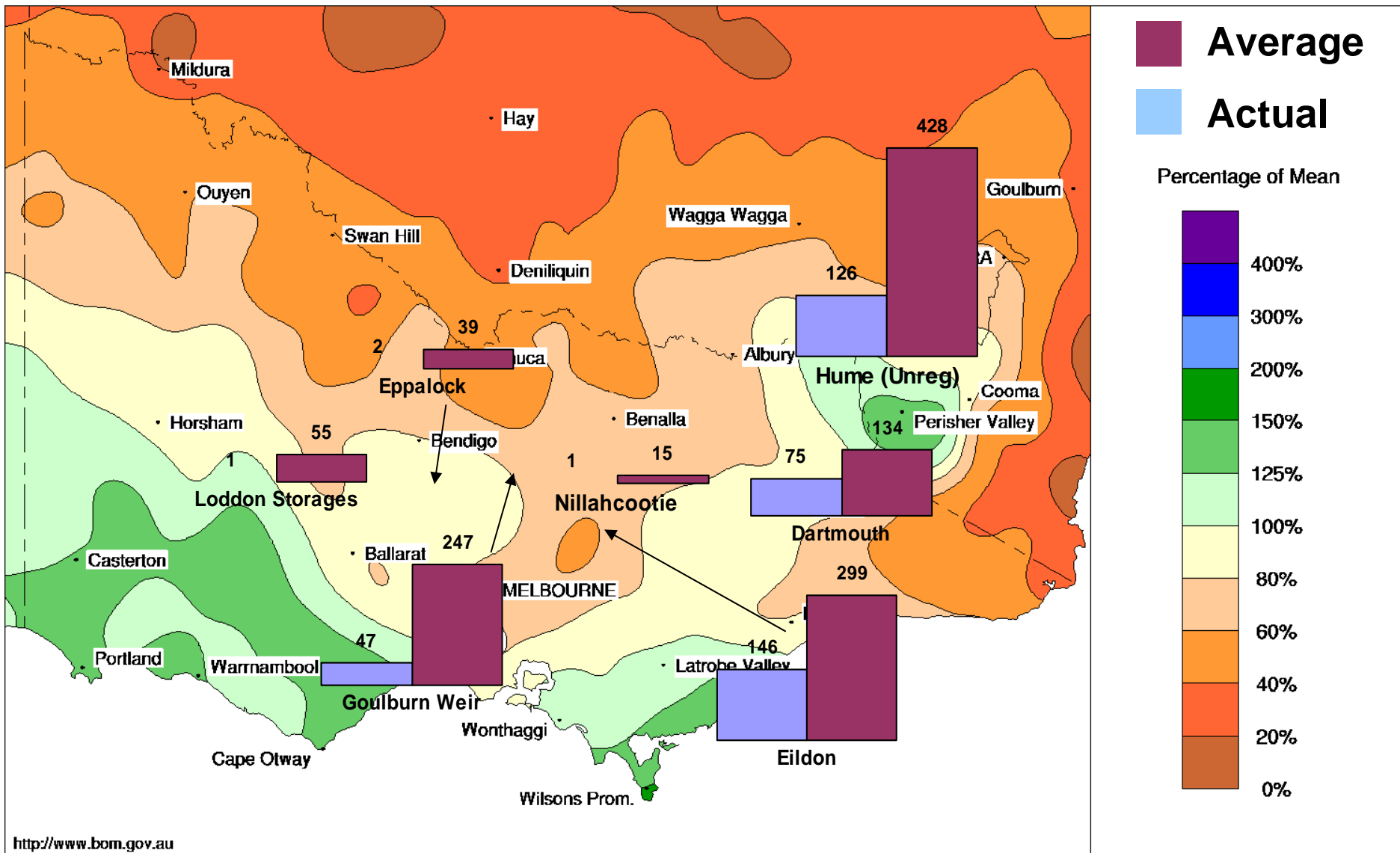
Volumes remaining	15 Sep Allocation	Volume allocated, but not delivered (GL)	Volume expressed as %HRWS
Murray	13%	285.6	24%
Goulburn	7%	147.4	15%
Broken	0%	2.5	10%
Campaspe	0%	1.3	4%
Loddon	0%	0.3	2%
Bullarook	0%	0.0	0%

GOULBURN-MURRAY

WATER



Inflow Trends & Resource Position



<http://www.bom.gov.au>

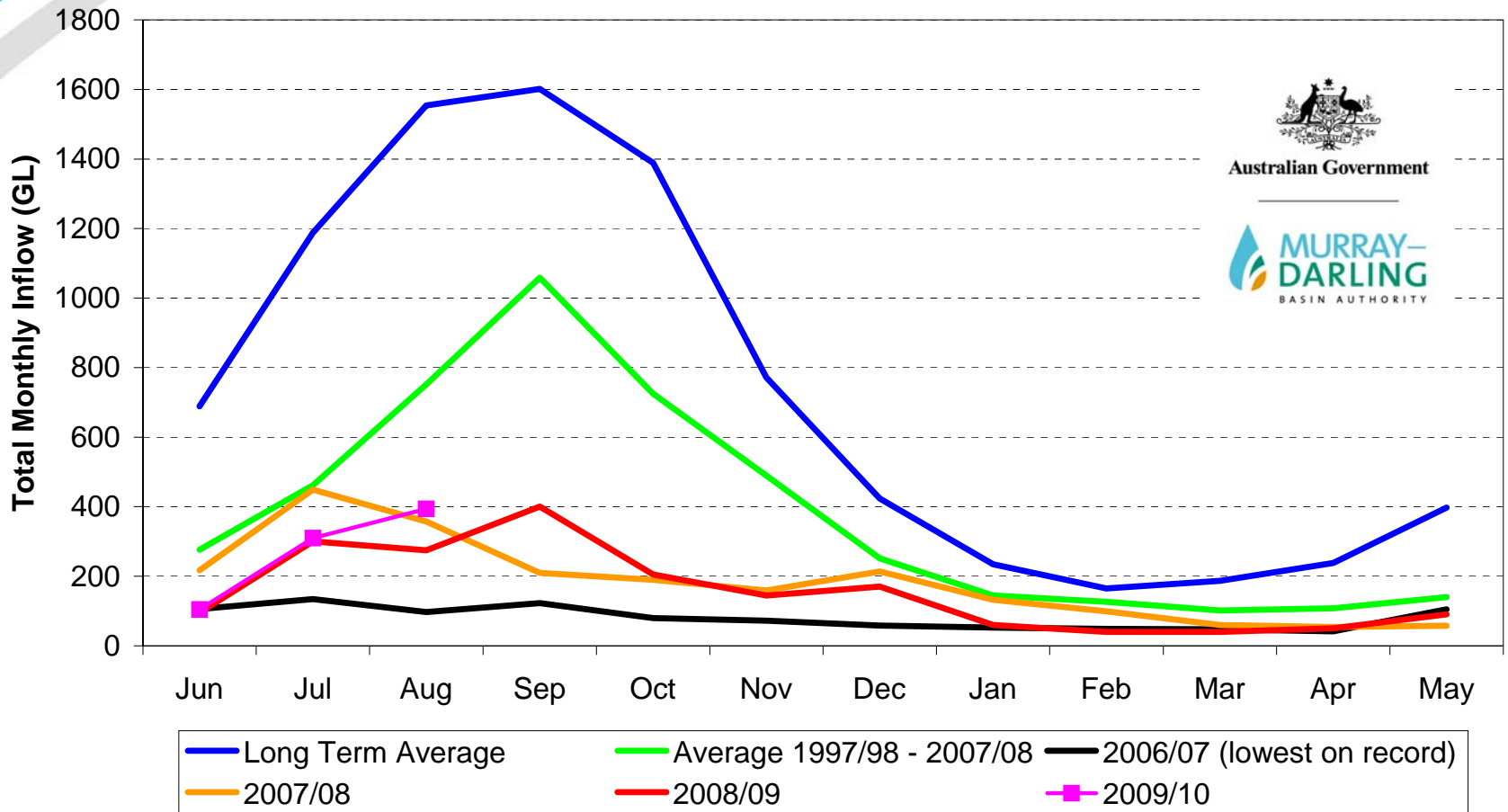


Inflows to 14 September

Storage	Inflow (GL)	% Average	% PoE
Dartmouth	41.3	27	80
Nillahcootie	0.6	5	98
Eildon	74.7	28	75
Goulburn Weir	27.1	12	96
Eppalock	1.1	3	97
Loddon	1.0	2	98



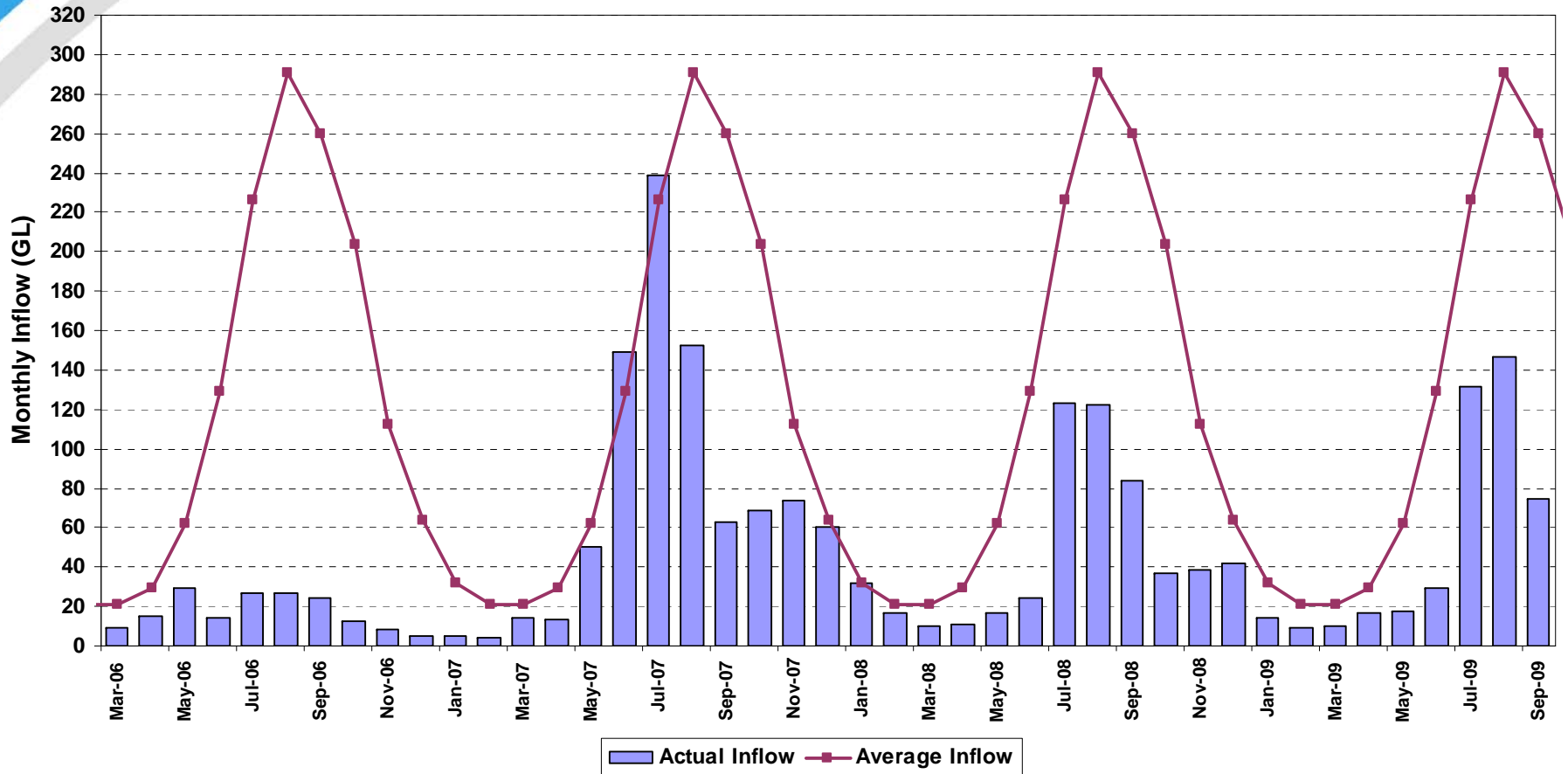
Murray System Monthly Inflows (Excluding Snowy and Darling Inflows)





Inflows to Lake Eildon

Updated to 14 September 2009





Storage Volumes (14 September)

Storage	2009 (GL)	2008 (GL)
Dartmouth (Total)	993.3	786.7
Dartmouth (Vic active)	450.0	432.0
Hume	838.9	936.9
Hume (Vic active)	330.0	360.0
Buffalo	18.7	18.5
William Hovell	13.5	13.6

Dartmouth and Hume Vic active based on the end of August 2009 MDBA resource assessment



Storage Volumes (14 September)

Storage	2009 (GL)	2008 (GL)
Eildon	781.1	761.7
Waranga Basin	161.5	149.9
Nillahcootie	6.8	13.3
Mokoan	0	23.9
Eppalock (G-MW)	3.8	6.2
Cairn Curran	4.5	8.9
Tullaroop	3.4	4.9



Darling River

- Volume in Menindee Lakes (16 Sept. 09)
230 GL, 13% of capacity
- Less than 640 GL, storages/releases
remain with NSW
- Catchment dry, very low flows in Darling
River
- No benefit to Victoria in 2009/2010



2009/10 Operations

- Contingency arrangements to run the River Murray no longer required
- Lake Victoria will operate all year
- Focus in irrigation areas is to manage with less than BE loss allowance
- Temporary Qualification of Rights apply in all regulated water systems, lapse in Murray and Goulburn at 20% allocation
- Reduces environmental flow obligations, still in place in all systems except Murray



Allocation Outlooks

- Updated middle of each month
- Based on current catchment conditions and expected response



Allocation Outlook

as at 15 September 2009

MURRAY

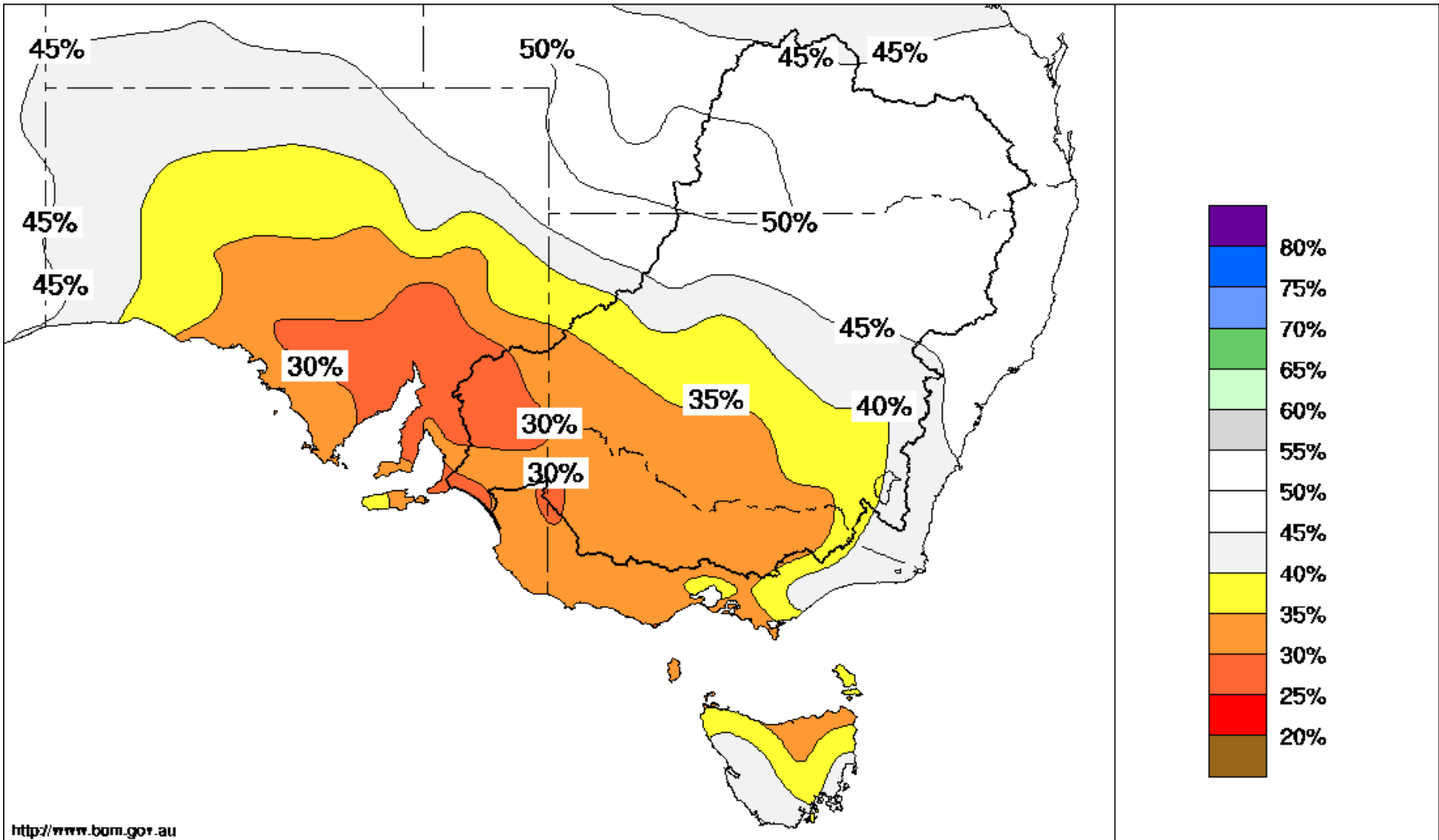
Scenario	15-Oct-09	15-Dec-09	15-Feb-10
Wet	37%	60%	71%
Average	28%	45%	53%
Dry	18%	24%	27%

GOULBURN

Scenario	15-Oct-09	15-Dec-09	15-Feb-10
Wet	47%	85%	97%
Average	31%	44%	48%
Dry	15%	23%	26%

Chance of exceeding the median Rainfall September to November 2009

Product of the National Climate Centre



<http://www.bom.gov.au>



Longer term outlook

- No reserve at end of 2009/10 season
- Likely starting allocation for 2010/11 is zero unless good autumn break



Recap main points

- Murray and Goulburn allocations higher than mid-September 2008
- Murray and Goulburn allocations in Feb 2010 most likely to be in 30% to 50% range
- Low allocations make for difficult operating conditions
- Ever changing conditions makes for dynamic water resource management
- September inflows best since 2005
- Very low end of season reserve, another low start in 2010/11, wide range of outcomes next season

- → **Discussion**